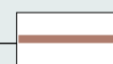


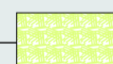
ASSENZA DI INTONACO



OSSIDAZIONE E CORROSIONE



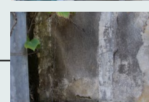
ESFOLIAZIONE



EROSIONE



APPOSIZIONE DI MATERIALE INCOERENTE



DILAVAMENTO INTENSO



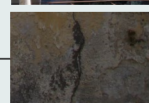
DISTACCO



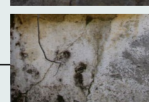
MACCHIA



FESSURAZIONE



DEGRADO BIOLOGICO



ALVEOLIZZAZIONE



Scala 1:50 0 1 2 5m

